

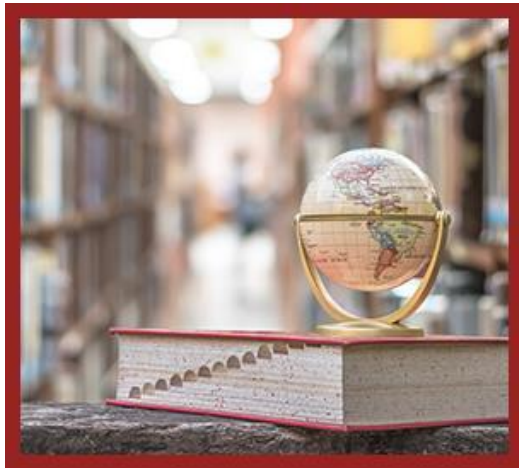


YOU HAVE MANY OPTIONS!

To claim the tax credit, taxpayers must contribute an extracurricular activity for which the school district requires a fee.

Available activities vary by school site.

Please contact the specific school for the activities at the location.



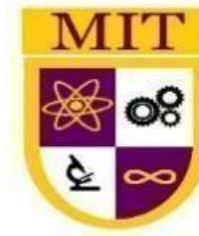
Riverside Traditional
Elementary School
(602)272-1339
1414 South 51st Avenue
Phoenix, AZ 85043



Kings Ridge Preparatory
Academy
(602)477-8960
3650 South 64th Lane
Phoenix, AZ 58043



MIT STEM Jr. High School
(602)477-2780
3900 South 55th Avenue
Phoenix, AZ 85043



Riverside Elementary School District No.2

1414 South 51st Avenue
Phoenix, AZ 85043
Phone: (602)477-8900
Fax: (602)272-8378
www.resdonline.org



Riverside Elementary School District No.2

Tax Credit Program EXTRACURRICULAR ACTIVITIES



Support our schools and receive an income tax credit for the full amount you contributed up to \$200 for single or head of household; up to \$400 per married couple.

Here's your chance to make an important contribution to education!

Count me in!

HERE'S YOUR CHANCE –

Arizona tax law (ARS 43-1089.01) allows taxpayers a tax credit* of up to \$200 for single or head of household; up to \$400 per married couple if they contribute to extracurricular activities in public schools. Extracurricular activities such as sports, band, speech and debate., or overnight field trips are generally not fully funded by school districts. These programs depend on fees from students.

YOU NEED NOT BE PRESENT TO WIN!

The tax credit is available to all State of Arizona tax payer, regardless of whether they have children in school. Contributions from businesses are always welcome; however, such contributions cannot be used to obtain tax credit.

IT'S YOUR CHOICE

You may donate less than \$200 and be eligible to receive the state tax credit in the amount of your donation. The amount you donate up to \$200 for single or head of household; up to \$400 per married couple – will be the amount you may claim as a state tax credit. For example, if you donate \$50, your state tax credit would be \$50.

You may split your donation among more than one public school or more than one activity, but will still qualify for a maximum state tax credit for \$200 for single or head of household; up to \$400 per married couple. Just send your check, along with the Response Card, to the school(s) of your choice. A receipt will be mailed to you.

*KNOW THE DIFFERENCE

Contributions to public schools have always been tax deductible. A tax deduction allows you to subtract the amount of a contribution from the amount of your taxable income. The new law allows a tax credit, which is subtracted from the amount of taxes you owe. A tax credit is a full refund of your money.

Price List

A CONTRIBUTION GETS THE MONEY WHERE IT NEED TO GO

Contributions that are eligible for a tax credit are donated directly to the schools, not to the state and not to the school district. The funds are not subject to the revenue control limit that prevents schools from spending more than a fixed amount for programs. Your donation will go exactly where you want it to immediately helping more students become involved in fun, meaningful, life-enhancing activities.

STEM²

Science, Technology, Engineering, Math, Medicine

It's This Easy!

Using the response card on the right, you'll have lots of ways to say "Yes!" in support of our schools. Here's how it works:

- Write the dollar amount that you want to contribute.
- Indicate the school you would like to support (see school listing on back of brochure). Make check payable to that school.
- Check the box of an activity category you want to fund. If you'd like to support all activities at a school just check the "any extracurricular activity" box.
- Fill in your name, address and phone number.
- Drop off the form and your check at your local school and pick up your receipt. If you prefer to mail it to the school, we'll return your receipt in the same fashion. (Must be postmarked by December 31, 2023, no later than April 15, 2024)
- You can also visit our website www.resdonline.org – Parent Resources – School Tax Credits to make you contribution Online.

RESPONSE CARD

Please apply my donation* of

\$ _____ to

CALENDAR TAX YEAR _____

(Up to \$200 for single or head of household; up to \$400 per married couple)

To extracurricular activity programs at this school:

(See back panel for list of schools)

I wish to designate this money for:

- General fees
- Athletics
- NJHS, Student Council
- Other _____
- Any extracurricular activity

Please provide information for your receipt:

Name _____

Address _____

Phone # _____

Please turn into front office (at the elementary or middle school), or mail directly to the School District.

*Tax credit can be claimed on personal tax returns only. Contributions from businesses are welcome. Such contributions are deductible, but cannot be used to claim a tax credit.